



INTERNATIONAL EQUIPMENT COMPONENTS, INC.

www.levelingmounts.com & www.iec-corp.com

LEG PRODUCTS CATALOG



**LEVEL
EXTEND
SUPPORT**

Ph. 562.597.4533

Welcome ...

We're pleased to introduce our new component catalog of Leg products. This catalog includes hundreds of products used for elevating, rolling and gliding furniture, cabinets, equipment and displays.

We've included in this catalog an overview page of the complete line of legs and casters, a new selection guide and product tables with specifications for easily finding an off-the-shelf leg or caster just right for your application. We've also included a standard quote request form for requesting OEM pricing on larger quantities.

IEC's mission since 1992 has been to lead the equipment component industry in meeting the needs of OEM equipment, furniture and product manufacturers with a broad range of products that match the high standards and cost requirements of our customers. We have specialized in providing solutions for elevating, rolling and gliding by offering products in many materials and features most commonly requested by our component customers. We have an engineering department available who are always happy to assist with selecting from thousands of standard off-the-shelf products, the best solution for your application.

We recognize the requirements of OEM manufacturers for high performance products, attractive designs and prices to make their products more competitive. We have made every effort possible to address these needs in this leg and caster catalog. We now offer the industry's most complete range of components for leveling, gliding, sliding, elevating, rolling, vibration control and surface protection.

Paying attention to our customers and their needs for over 20 years has enabled IEC to become the leader in the design of equipment component solutions. This dedicated effort has resulted in the development of thousands of new products, stronger customer service and the assurance that the products you specify today will continue to be available for the duration of your product life-cycle.



INTERNATIONAL EQUIPMENT COMPONENTS, INC.

Phone: 562.597.4533 eMail: sales@iec-corp.com

Web: www.levelingmounts.com | www.iec-corp.com

LEG PRODUCTS
CONTENTS

CONTENTS

INTRODUCTION

CONTENTS	3
OVERVIEW	4
SELECTION	5

FURNITURE & EQUIPMENT LEGS

Adjustable Legs	6,7
Stainless Steel Round & Square Tubing Feet	6
Plastic Legs	8,9
Bell Glides	9

RFQ FAX-BACK FORM

Request A Quote Form	10
Warranty and Disclaimer.....	11



LEGS & CASTERS

ADJUSTABLE METAL LEGS

IEC's adjustable metal legs are available in stainless steel, matte nickel and black epoxy finish. The base diameter of the foot is 1-3/8 inch. You can also choose a different foot. To calculate the overall height, add the leg height and the foot adjustment height.



STAINLESS STEEL TUBING FEET WITH ADJUSTABLE LEGS

IEC's round and square stainless steel tubing feet are made to fit 16-18 ga tubing. The foot has hex flats and can be raised 1-1/8" inches from the minimum height shown ("C" dimension). The housing that fits inside the tube is zinc die cast (Zamak). The foot is clad with 304 SS. NSF certified.



PLASTIC LEGS

IEC's plastic legs are available in brown polypropylene materials with 100 lb load rating.



PLASTIC BELL GLIDES (CASTER REPLACEMENTS)

IEC's bell glides are made to replace caster wheels on rolling chairs, tables, displays, etc. The steel stem has a grip ring, and the bell glides have a black nylon base. The IL9-CAST has a white nylon base with a nickel plated shell.





Features by Family	Adjustable Legs	Plastic Legs	Bell Glides
Furniture	Yes	Yes	Yes
Tables	Yes	Yes	Yes
Cabinets	Yes	Yes	Yes
Equipment	Yes	-	-
Height Adjustment	Yes	-	-
Roll	-	-	-
Slide	-	-	Yes
Black Finish	Yes	Yes	Yes
Nickel Finish	-	-	-
Stainless Steel	Yes	-	-
Grey or Brown	-	Yes	-
Chrome Finish	Yes	-	-
Unfinished	-	-	-
Supports: 20-225 lbs	Yes	Yes	Yes
Supports: 225-500 lbs	Yes	Yes	-
Catalog Page	6-7	8-9	9



**Furniture & Appliance
Legs – Adjustable Metal**

IEC's adjustable metal legs are available in stainless steel (-SS) and black ABS plastic (-BLK).

IL635, IL638 and IL640 have 3/4" of adjustment. IL636, IL637 and IL639 have 1-3/4" adjustment.

IL636 thru IL640 have a 2000 lb load rating (NSF certified). IL635 and IL641 have a 500 lb load rating.



**Stainless Steel Tubing Feet
with Adjustable Legs**

These round and square stainless steel tubing feet are made to fit 16-18 ga tubing. The foot has hex flats and can be raised 1-1/8" inches from the minimum height shown ("C" dimension). The housing that fits inside the tube is zinc die cast (Zamak). The foot is clad with 304 SS. NSF certified.

IL636-PLT (shown below)

The plate for the IL636 foot is a 3-1/2" (89 mm) SQUARE STEEL PLATE, 1/8" THICK, GALVANIZED, WITH 1/2-13 THREADED CENTER HOLE, 4 CORNER HOLES, 5/16" DIA, SPACED 67 MM (2-5/8") apart. This plate is included when ordering the IL637 legs. (+638)



METAL — ADJUSTABLE LEGS

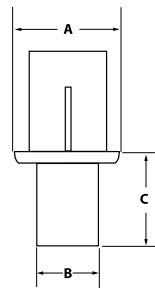
P/N	LEG HEIGHT	THREAD/ PLATE SZ.	WEIGHT (LB)
IL635X4-6X38-MN	4	3/8-16 x 3/8	.75

Adjustment = 3/4". 1-7/16 wide across top hex flats with 1-1/4" foot diameter.

METAL — ADJUSTABLE LEGS

P/N	LEG HEIGHT	THREAD/ PLATE SZ.	WEIGHT (LB)
IL636X4-7X75-SS	4	1/2-13 x 3/4	.75
IL636X6-7X75-SS	6	1/2-13 x 3/4	1.0

Adjustment = 1-3/4". Stainless steel leg is 1-5/8" diameter. Adjustable foot is 1-1/4" diameter with 6 wrench flats. Also available with 2" diameter shell.



ROUND & SQUARE SS TUBING FEET

P/N	A	B	C
IL27-636-RD-SS	1-1/2	1-1/8	1-1/2
IL27B2-636-RD-SS	1-5/8	1-1/8	1-1/2
IL27A-636-RD-SS	2	1-9/16	1-1/2
IL27-636-SQ-SS	1-1/2	1-1/8	1-1/2
IL27B2-636-SQ-SS	1-5/8	1-1/8	1-1/2
IL27A-636-SQ-SS	2	1-9/16	1-1/2

METAL — ADJUSTABLE LEGS

P/N	LEG HEIGHT	THREAD/ PLATE SZ.	WEIGHT (LB)
IL637X4-SS	4	3-1/2 SQ	.75
IL637X6-SS	6	3-1/2 SQ	1.0

Adjustment = 1-3/4". Stainless steel leg is 1-5/8" diameter. Adjustable foot is 1-1/4" diameter with 6 wrench flats. Also available with 2" diameter shell.



**Furniture & Appliance
Metal & ABS Plastic Legs**

IEC's metal and plastic adjustable legs are available in stainless steel (-SS), and black ABS plastic (-BLK).

IL635, IL638 and IL640 have 3/4" of adjustment. IL636, IL637 and IL639 have 1-3/4" adjustment.

IL636 thru IL639 have a 2000 lb load rating (NSF certified). IL635 and IL640 have a 500 lb load rating.



METAL — ADJUSTABLE LEGS

P/N	LEG HEIGHT	THREAD/ PLATE SZ.	WEIGHT (LB)
IL638X4-SS	4	3-1/2 SQ	.75
IL638X6-SS	6	3-1/2 SQ	1.0

Adjustment = 3/4". Top of leg is 2-1/4" in diameter. Adjustable foot diameter is 1".



ABS PLASTIC — ADJUSTABLE LEGS

P/N	LEG HEIGHT	THREAD/ PLATE SZ.	WEIGHT (LB)
IL638X6-BLK	6	3-1/2 SQ	1.0

Adjustment = 3/4". Top of leg is 2-1/4" in diameter. Adjustable foot diameter is 1".



METAL — ADJUSTABLE LEGS

P/N	LEG HEIGHT	THREAD/ PLATE SZ.	WEIGHT (LB)
IL639X4-6x75-SS	4	3/8-16 x 3/4	1.0
IL639X4-7x75-SS	4	1/2-13 x 3/4	1.0
IL639X6-7x75-SS	6	1/2-13 x 3/4	1.5
IL639X6-8x75-SS	6	5/8-11 x 3/4	1.5
IL639X6-9x75-SS	6	3/4-10 x 3/4	1.5

Adjustment = 1-3/4". 2" diameter SS shell over high strength black plastic body with non-marring black plastic foot.



ABS PLASTIC — ADJUSTABLE LEGS

P/N	LEG HEIGHT	THREAD/ PLATE SZ.	WEIGHT (LB)
IL640X4-6x1/2-BLK	4	3/8-16 x 1/2	.5
IL640X4-6x1/2-NKL	4	3/8-16 x 1/2	.5

Adjustment = 1". Top diameter of plastic leg is 2", as is the solid metal, nickel plated foot, with two wrench flats.



INTERNATIONAL EQUIPMENT COMPONENTS, INC.

Phone: 562.597.4533 eMail: sales@iec-corp.com

Web: www.levelingmounts.com | www.iec-corp.com

LEG PRODUCTS

PLASTIC LEGS

Furniture & Appliance Legs – Plastic

These plastic legs are made of brown polyethylene (100 lb load rating).



PLASTIC — FURNITURE AND APPLIANCE LEGS

P/N	LEG HT.	THREAD/ PLATE SZ.	WEIGHT (LB)
IL652X3-51-BRN	3	5/16-18 x 1	.20
IL652X5-51-BRN	5	5/16-18 x 1	.25



Plastic Bell Glides

IEC's bell glides are made to replace caster wheels on rolling chairs, tables, displays, etc. The steel stem has a grip ring, and the bell glides have a black nylon base. The IL9-CAST has a white nylon base with a nickel plated shell. The IL9-CAST-PVC has a non-skid gray PVC/rubber base.



IL9-CAST

These legs accept a 5/16-18 leveler or caster.

PLASTIC BELL GLIDES (CASTER REPLACEMENT)

P/N	BASE HT.	BASE DIA.	NECK DIA.	STEM DIA.	STEM HT.
IL-659X225	2-1/4	2-1/8	1-1/4	7/16	7/8
IL-659X125	1-1/4	2	1-1/2	7/16	7/8
IL-659AX125	1-1/4	2	3/4	7/16	7/8
IL9-CAST	1/2	1-3/8	N/A	7/16	7/8
IL9-CAST-PVC	1/2	1-3/8	N/A	7/16	7/8



Your Contact Information

NAME:	TITLE:
<input type="text"/>	<input type="text"/>
COMPANY:	E-MAIL:
<input type="text"/>	<input type="text"/>
STREET ADDRESS OR POB:	CITY:
<input type="text"/>	<input type="text"/>
STATE:	ZIP CODE:
<input type="text"/>	<input type="text"/>
PHONE:	FAX:
<input type="text"/>	<input type="text"/>

Standard Product Request

ITEM #	IEC PART NUMBER	DESCRIPTION	QUANTITY
1	<input type="text"/>	<input type="text"/>	<input type="text"/>

Comments/Special Instructions:

ITEM #	IEC PART NUMBER	DESCRIPTION	QUANTITY
2	<input type="text"/>	<input type="text"/>	<input type="text"/>

Comments/Special Instructions:

ITEM #	IEC PART NUMBER	DESCRIPTION	QUANTITY
3	<input type="text"/>	<input type="text"/>	<input type="text"/>

Comments/Special Instructions:

PLEASE FAX THIS FORM TO: 562-498-2275



INTERNATIONAL EQUIPMENT COMPONENTS, INC.

Phone: 562.597.4533 eMail: sales@iec-corp.com

Web: www.levelingmounts.com | www.iec-corp.com

Warranty & Disclaimer

IEC warrants each product against defects in workmanship and material for 90 days from the date of delivery to the user. The warranty is limited to the repair or replacement of any part(s) which are found by IEC to be defective and does not apply to ordinary wear tear, abuse, misapplications and altered products.

All data, dimensions and tables have been thoroughly checked but we can not assume liability for any possible errors or omissions. If you find an error, please notify us so we can correct it for future editions. We reserve the right to change designs and/or specifications without notice. In the event of a change, every attempt will be made to notify the current users.

© Copyright 2015. International Equipment Components, Inc. All rights reserved.

IEC INTERNATIONAL EQUIPMENT COMPONENTS, INC.
www.levelingmounts.com & www.iec-corp.com

HEAVY-DUTY LEVELERS

ANY THREAD ... ANY LENGTH ... ANY BEAM

**LEVEL
ALIGN
STABILIZE
PROTECT**

Ph. 562.597.4533

IEC INTERNATIONAL EQUIPMENT COMPONENTS, INC.
www.levelingmounts.com & www.iec-corp.com

MEDIUM-DUTY LEVELERS

ANY THREAD ... ANY LENGTH ... ANY BEAM

**LEVEL
ALIGN
STABILIZE
PROTECT**

Ph. 562.597.4533

IEC INTERNATIONAL EQUIPMENT COMPONENTS, INC.
www.levelingmounts.com & www.iec-corp.com

LIGHT-DUTY LEVELERS

ANY THREAD ... ANY LENGTH ... ANY BEAM

**LEVEL
ALIGN
STABILIZE
PROTECT**

Ph. 562.597.4533

IEC INTERNATIONAL EQUIPMENT COMPONENTS, INC.
www.levelingmounts.com & www.iec-corp.com

METRIC LEVELERS

ANY THREAD ... ANY LENGTH ... ANY BEAM

**LEVEL
ALIGN
STABILIZE
PROTECT**

Ph. 562.597.4533

**INTERNATIONAL
EQUIPMENT COMPONENTS, INC.**

2201 E. Willow Street, D-104,

Signal Hill, CA 90755

Email: sales@iec-corp.com

Phone: 562-597-4533

Fax: 562-498-2275

Web: www.iec-corp.com

IEC INTERNATIONAL EQUIPMENT COMPONENTS, INC.
www.levelingmounts.com & www.iec-corp.com

KNOB & HANDLE

**CLAMP
ADJUST
STABILIZE
FASTEN**

Ph. 562.597.4533

IEC INTERNATIONAL EQUIPMENT COMPONENTS, INC.
www.levelingmounts.com & www.iec-corp.com

CAP & PLUG PRODUCTS

**FEET
SLIDE
PROTECT
FINISH**

Ph. 562.597.4533

IEC INTERNATIONAL EQUIPMENT COMPONENTS, INC.
www.levelingmounts.com & www.iec-corp.com

SURFACE PROTECTION
SLIDERS, GRIPPERS & FELT

**CUSHION
QUIET
SLIDE
PROTECT**

Ph. 562.597.4533

IEC INTERNATIONAL EQUIPMENT COMPONENTS, INC.
www.levelingmounts.com & www.iec-corp.com

LEG PRODUCTS CATALOG

**LEVEL
EXTEND
SUPPORT**

Ph. 562.597.4533