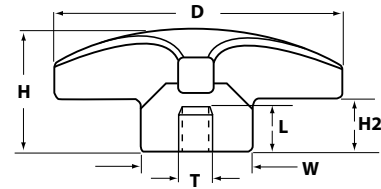




**3 Lobe Knob  
Socket - Phenolic**

These best selling, economical phenolic 3 lobe female threaded (socket) knobs are offered with a brass threaded insert. They have highly polished smooth surfaces and do not show a parting line. Very sturdy and attractive for any industrial or commercial application.

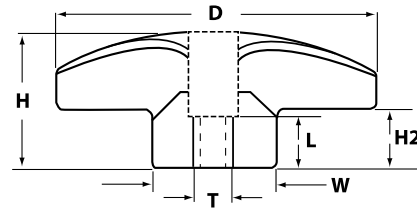


**3 LOBE KNOB SOCKET - PHENOLIC**

P/N	Dia.	Height	Width	H2	Thread	Length
IL260-4F	1	13/16	9/16	3/8	1/4-20	1/2
IL260-5F	1	13/16	9/16	3/8	5/16-18	1/2
IL260-6F	1	13/16	9/16	3/8	3/8-16	1/2
IL261-4F	1-1/2	1	7/8	1/2	1/4-20	1/2
IL261-5F	1-1/2	1	7/8	1/2	5/16-18	1/2
IL261-6F	1-1/2	1	7/8	1/2	3/8-16	1/2

**3 Lobe Knob  
Thru Hole - Phenolic**

These best selling, economical phenolic 3 lobe thru-hole threaded knobs are offered with a brass threaded insert. They have highly polished smooth surfaces and do not show a parting line. Very sturdy and attractive for any industrial or commercial application.

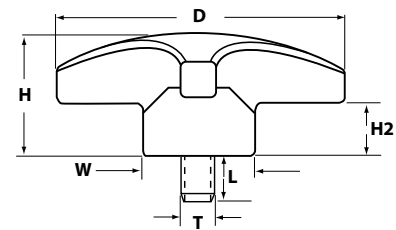


**3 LOBE THRU HOLE KNOB - PHENOLIC**

P/N	Dia.	Height	Width	H2	Thread	Length
IL261-4T	1-1/2	1	7/8	1/2	1/4-20	3/4
IL261-5T	1-1/2	1	7/8	1/2	5/16-18	3/4
IL261-6T	1-1/2	1	7/8	1/2	3/8-16	3/4

**3 Lobe Knob  
Steel Stud - Phenolic**

These best selling, economical phenolic 3 lobe threaded stud knobs are offered with a trivalent zinc plated steel stud. They have highly polished smooth surfaces and do not show a parting line. Very sturdy and attractive for any industrial or commercial application.



**3 LOBE KNOB WITH STEEL STUD - PHENOLIC**

P/N	Dia.	Height	Width	H2	Thread	Length
IL261-4MX1/2	1-1/2	1	7/8	1/2	1/4-20	1/2
IL261-4MX1	1-1/2	1	7/8	1/2	1/4-20	1
IL261-5MX1/2	1-1/2	1	7/8	1/2	5/16-18	1/2
IL261-5MX1	1-1/2	1	7/8	1/2	5/16-18	1
IL261-6MX3/4	1-1/2	1	7/8	1/2	3/8-16	3/4
IL261-6MX1	1-1/2	1	7/8	1/2	3/8-16	1